

Projecting Wisconsin High School Graduates

Presentation for the
WISCAPE SUMMIT
EDUCATING A DIVERSE WISCONSIN
April 26, 2018



Sarah Kemp, Researcher
Community & Environmental Sociology
Applied Population Laboratory
kemp@wisc.edu



Wisconsin Population by Race/Ethnicity



Wisconsin Population

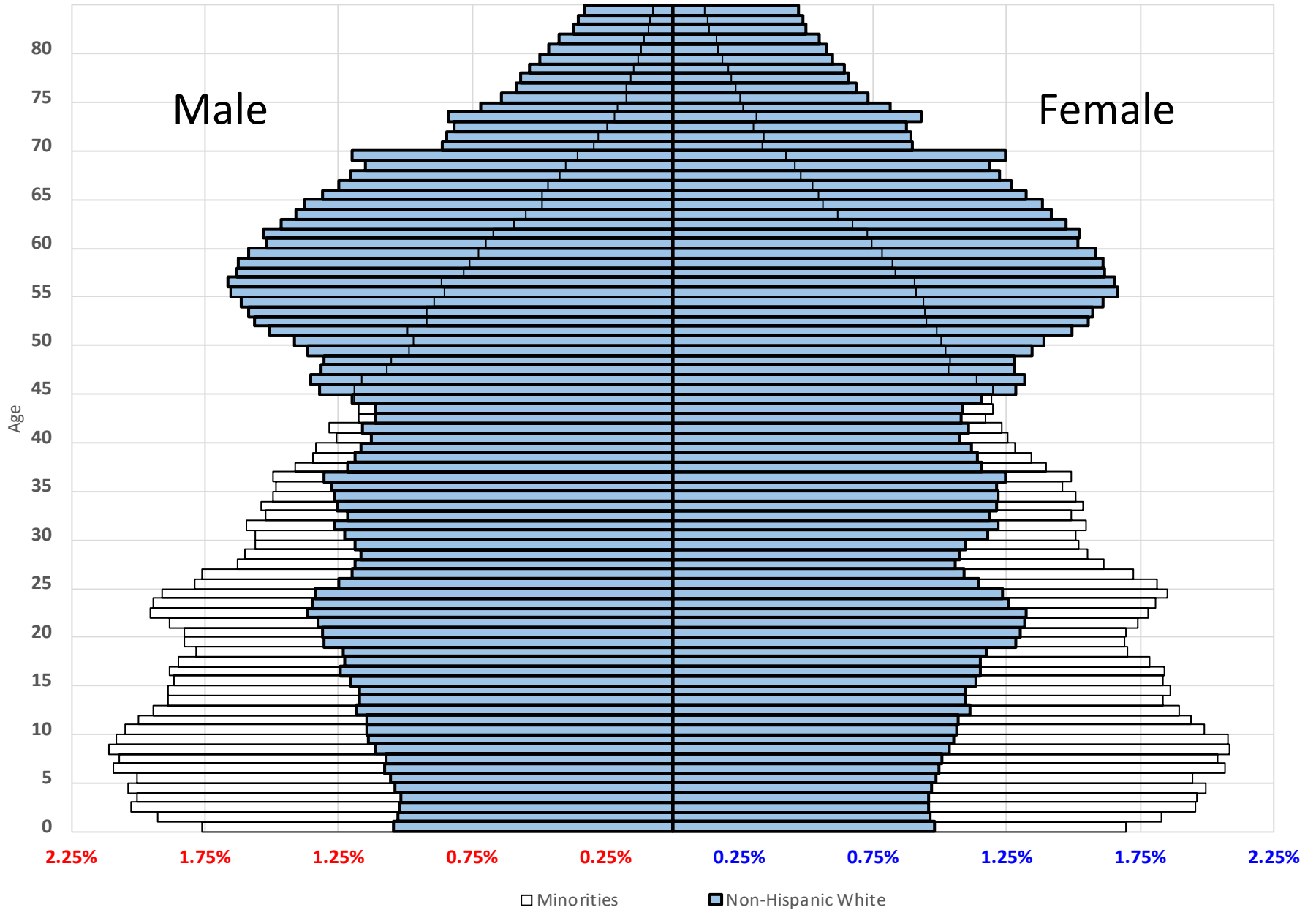
- 82.1% White alone (not Hispanic or Latino)
- 6.5% Hispanic or Latino (of any race)
- 6.2% Black or African American alone (not Hispanic or Latino)
- 2.6% Asian alone (not Hispanic or Latino)
- 1.8% Two or more races (not Hispanic or Latino)
- 0.8% American Indian and Alaska Native alone (not Hispanic or Latino)
- 0.1% Some other race alone (not Hispanic or Latino)
- 0% Native Hawaiian and Other Pacific Islander alone (not Hispanic or Latino)

Data source: 2012-2016 American Community Survey 5-Year Estimates - DP05

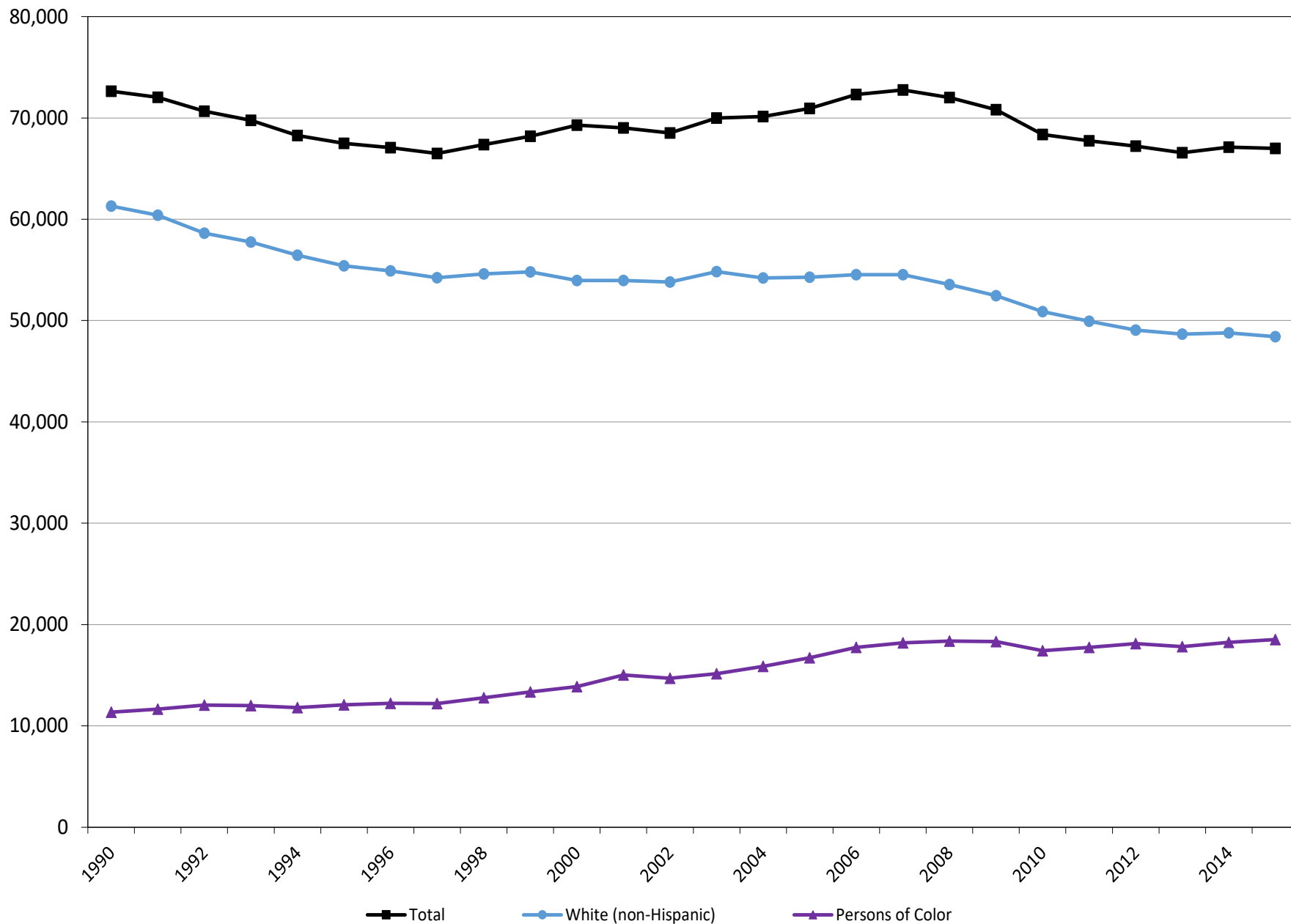
Image produced by GetFacts.wisc.edu, a product of  the Applied Population Lab



Wisconsin Age Structure by Race/Ethnicity

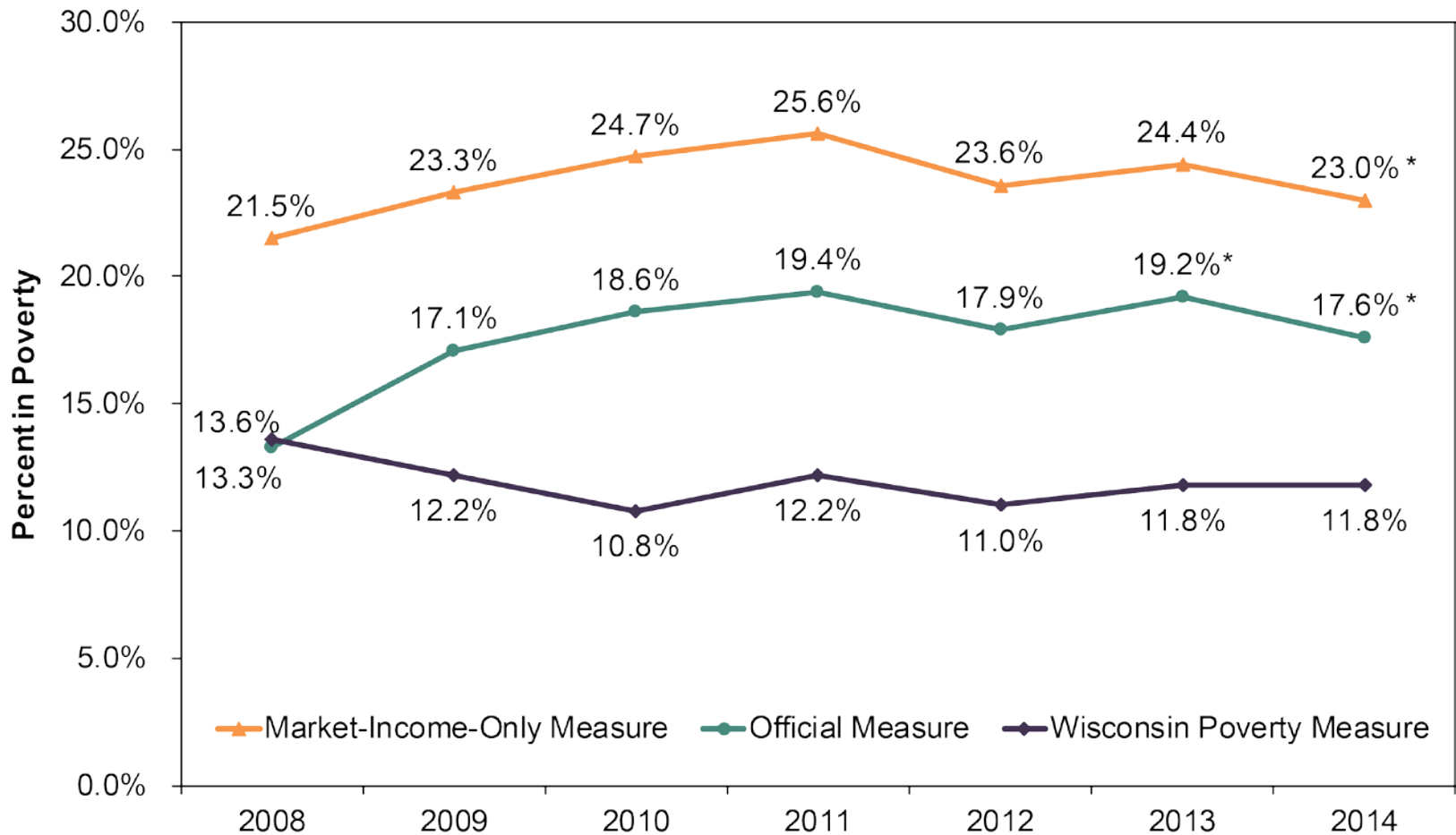


Wisconsin Births by Race/Ethnicity, 1990-2015



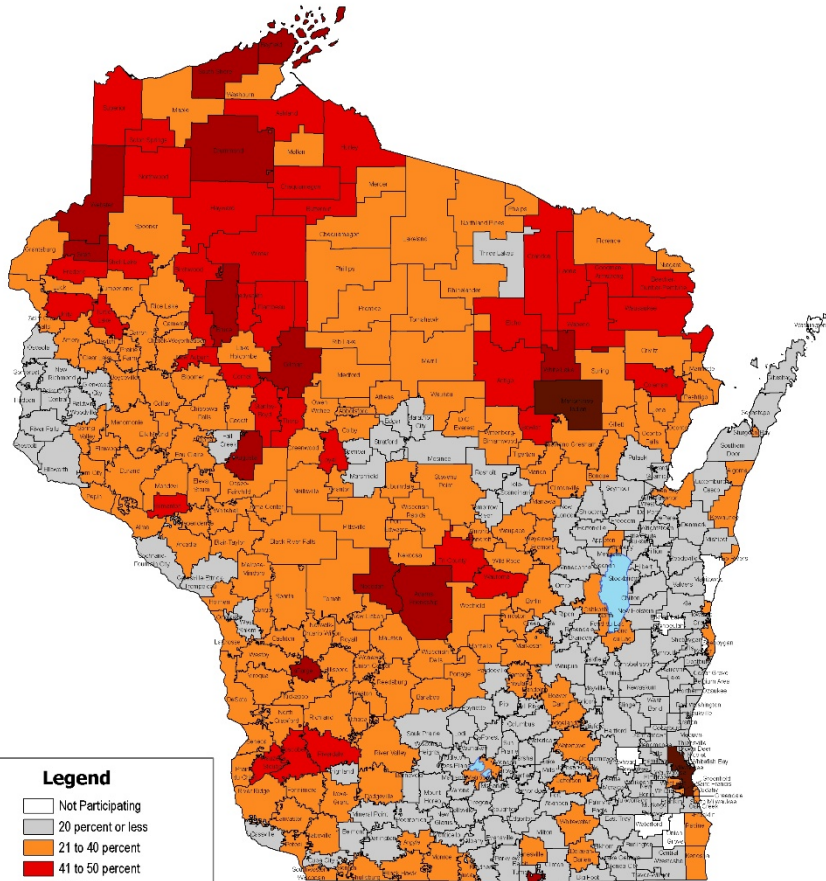
Child Poverty Rates in Wisconsin

Figure 2. Child poverty rates in Wisconsin decreased significantly from 2013 to 2014 under the market-income and official poverty measures, whereas the WPM rate was flat.



Child Poverty: Free and Reduced Lunch

**Wisconsin Public School Districts
Free or Reduced-Price School Meal Eligibility
2003-2004**

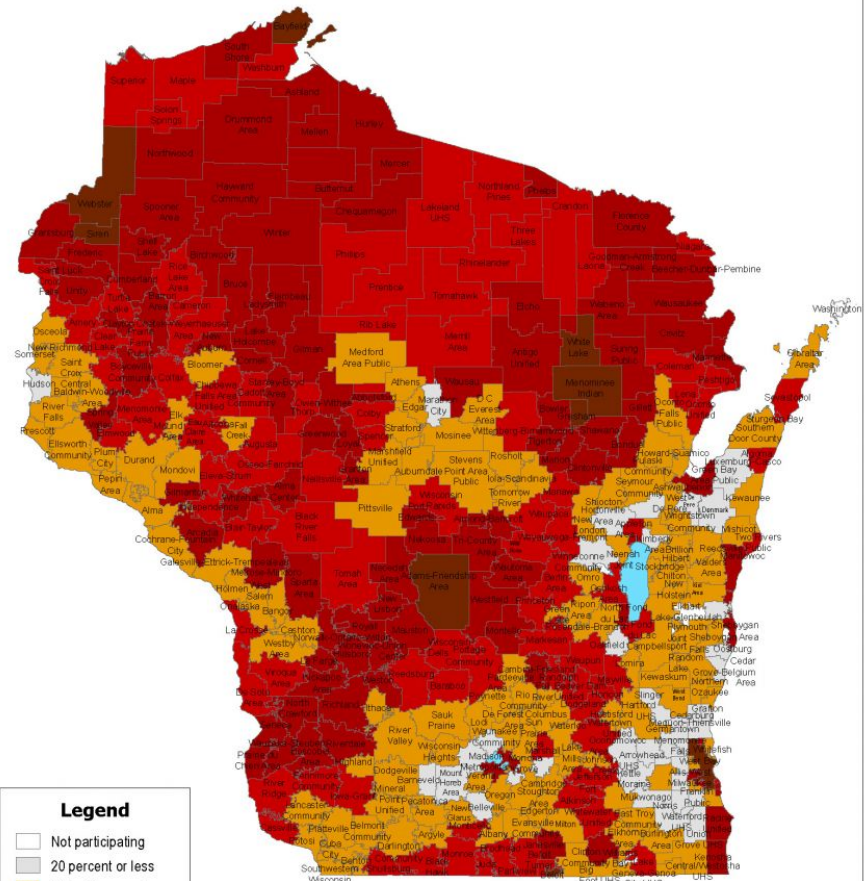


Data Source: National School Lunch Program reimbursement claims submitted by school districts to the DPI

October, 2003



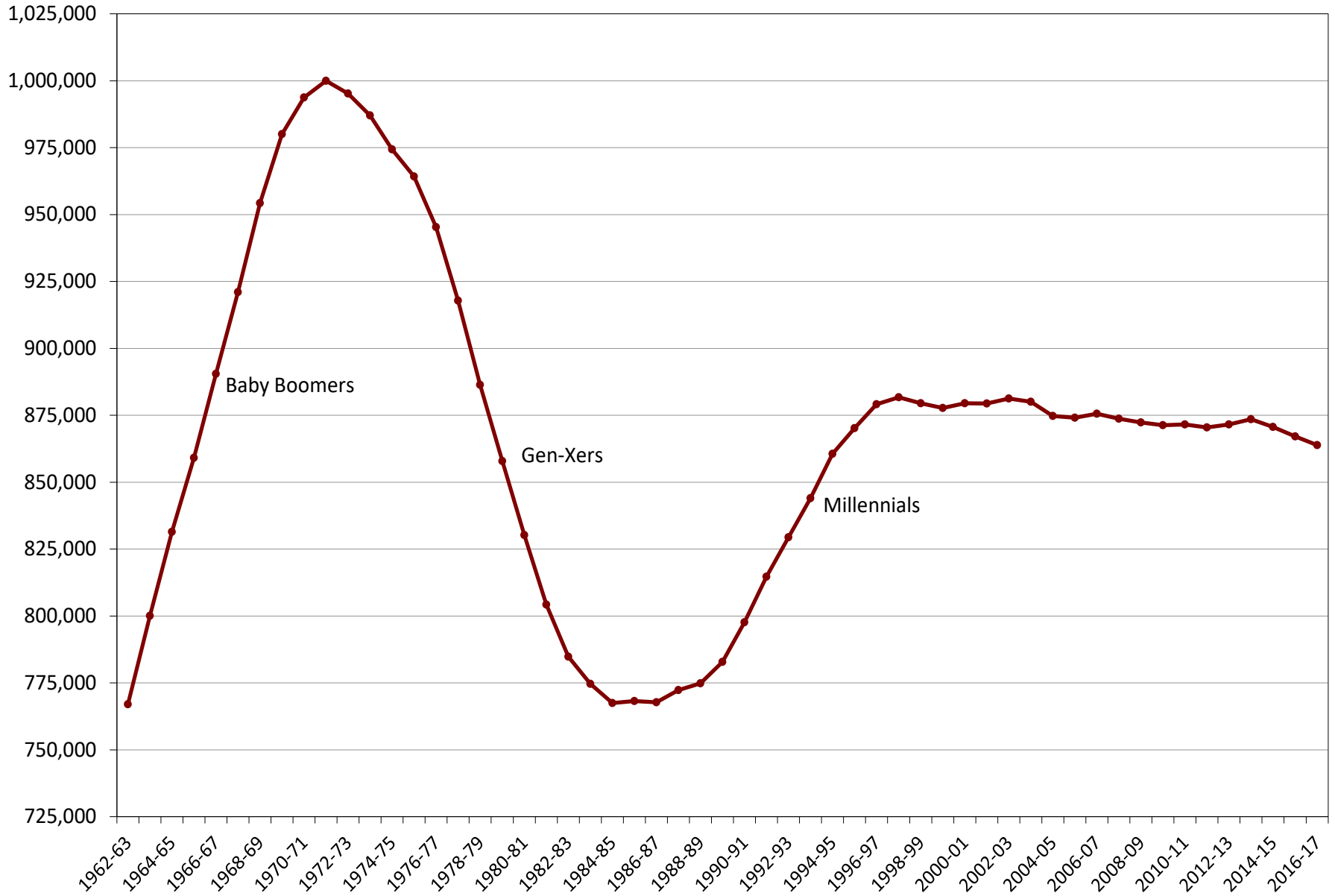
**Wisconsin Public School Districts
Free or Reduced-Price School Meal Eligibility
2013-2014**



Data Source: National School Lunch Program reimbursement claims submitted by school districts to the DPI. (Certified October 2013 count)
May 2014

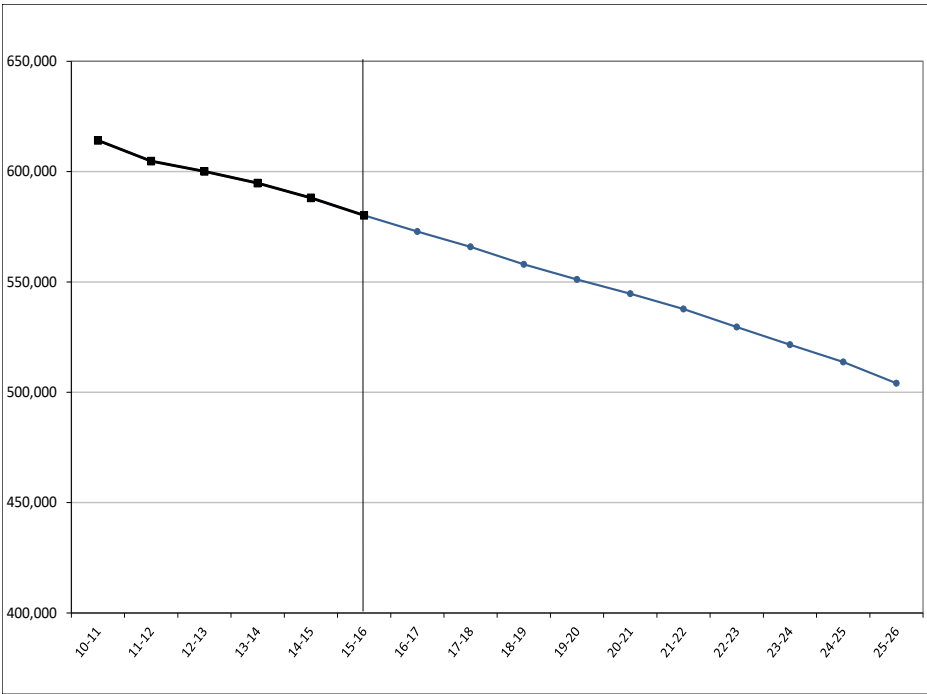


Wisconsin's School Enrollment, 1962-2016

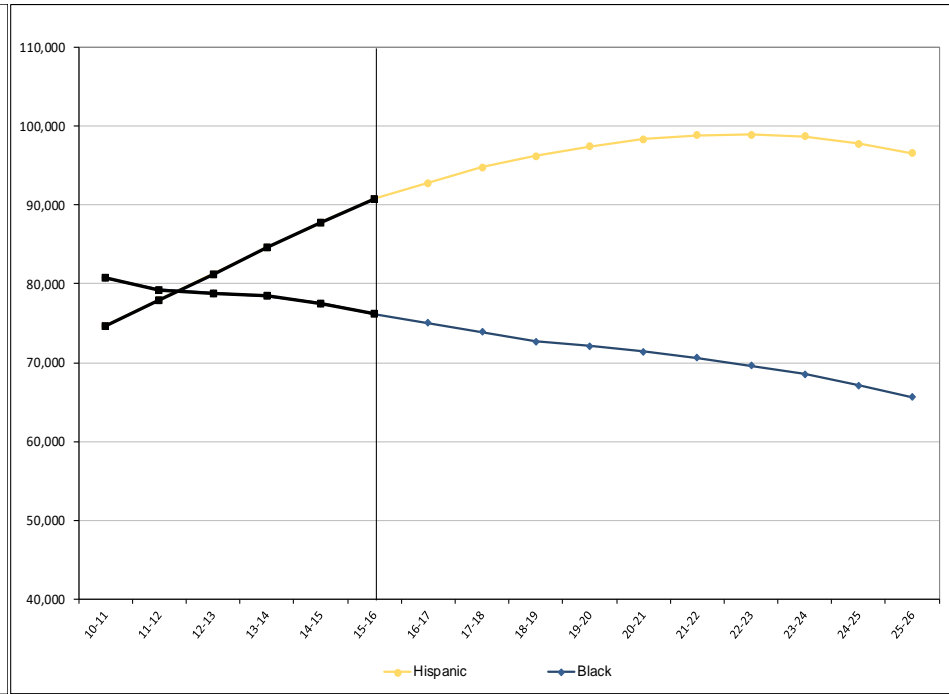


Public School Enrollment Projections by Race/Ethnicity

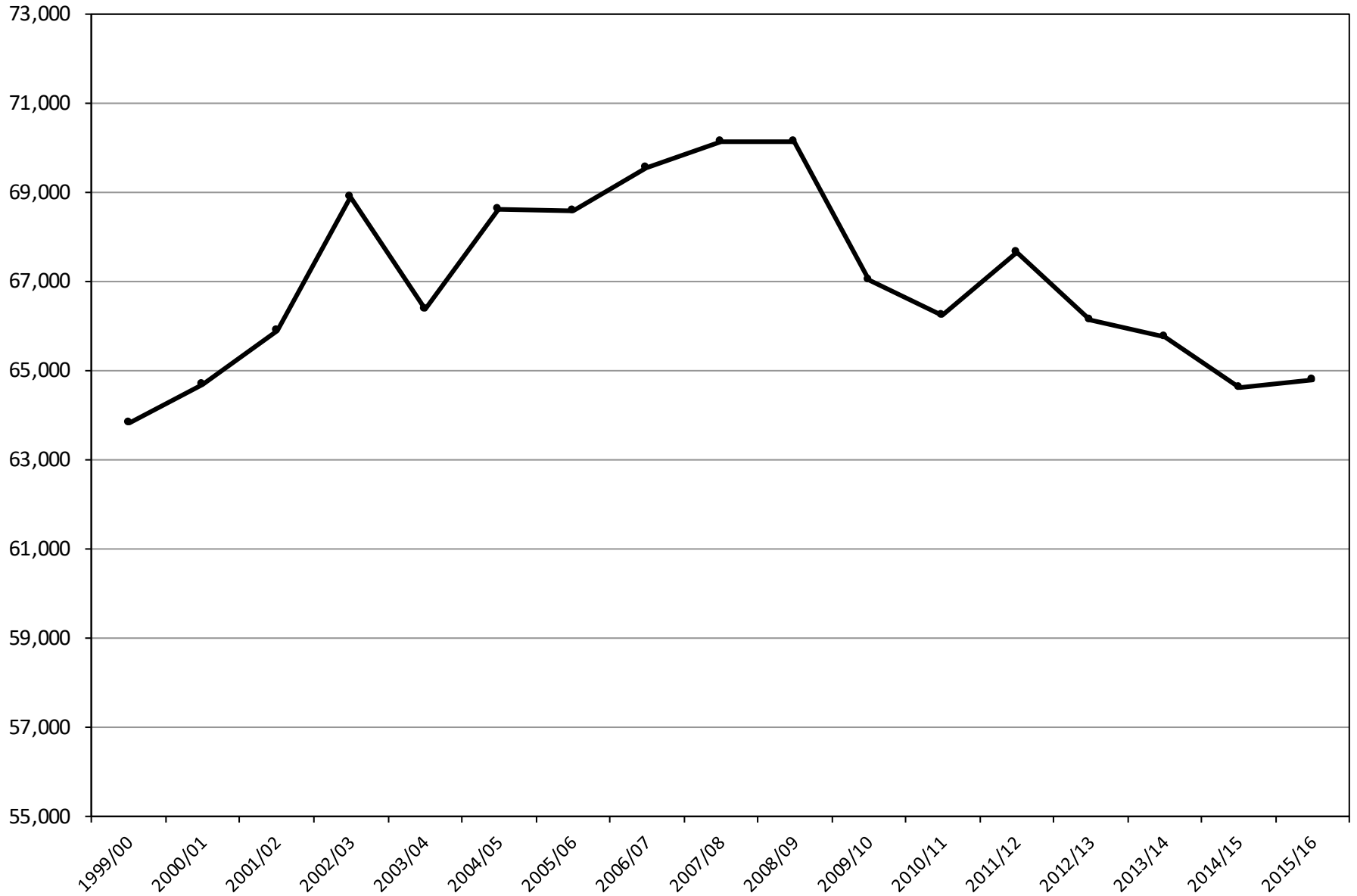
Non-Hispanic White



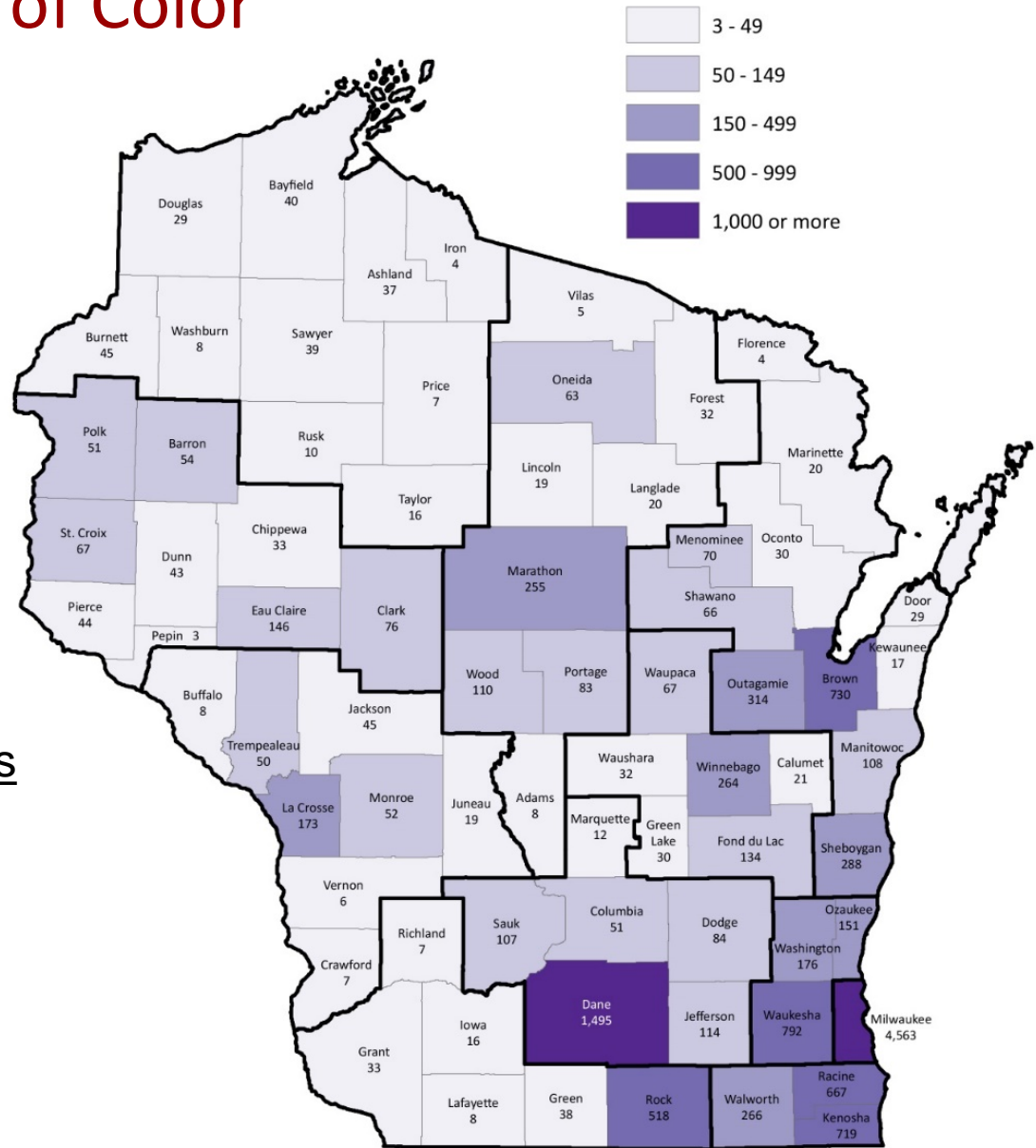
Hispanic and Black



Wisconsin High School Graduates, 2000-2016



High School Graduates of Color by County, 2016



Largest Number of Graduates

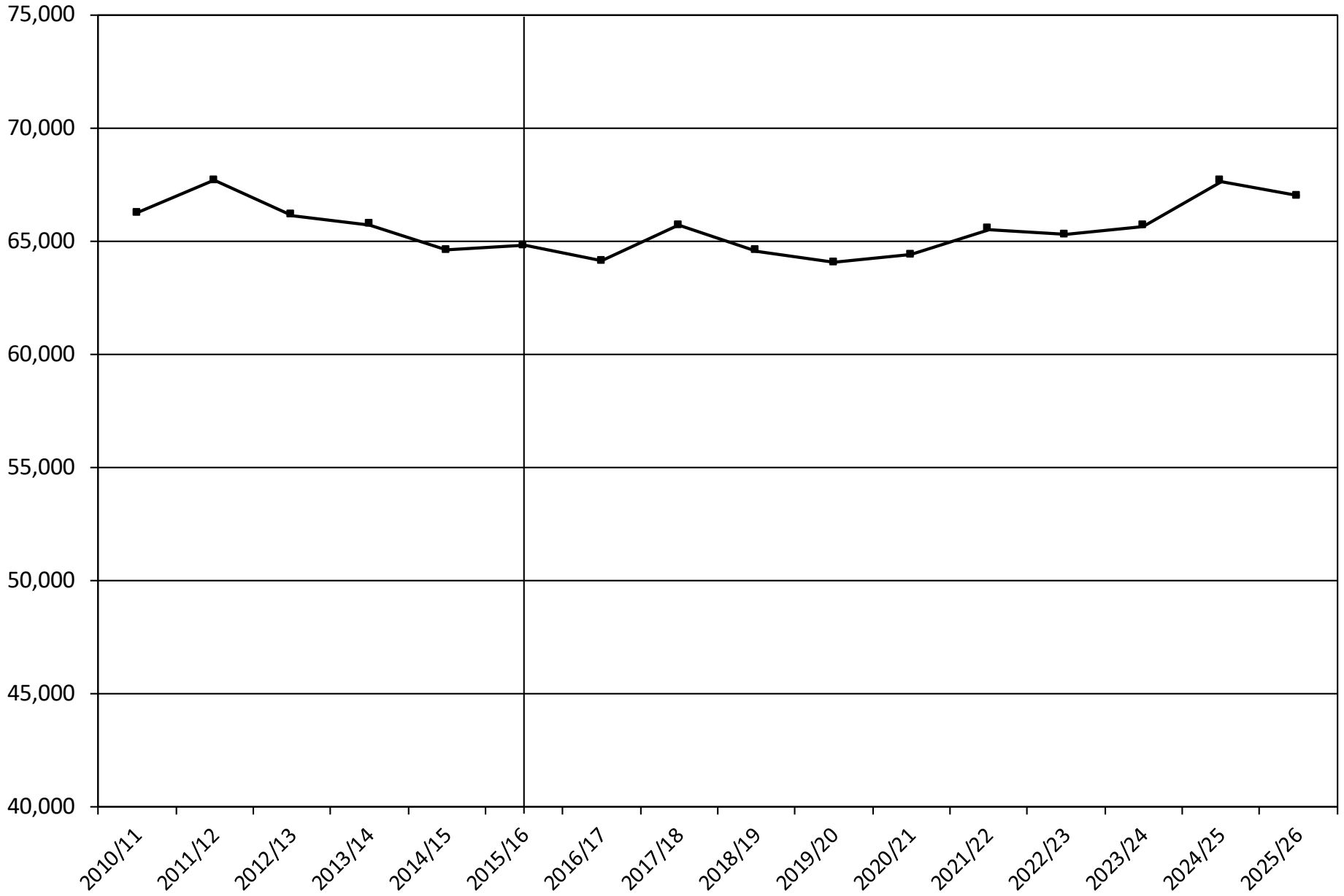
Milwaukee (4,563)

Dane (1,495)

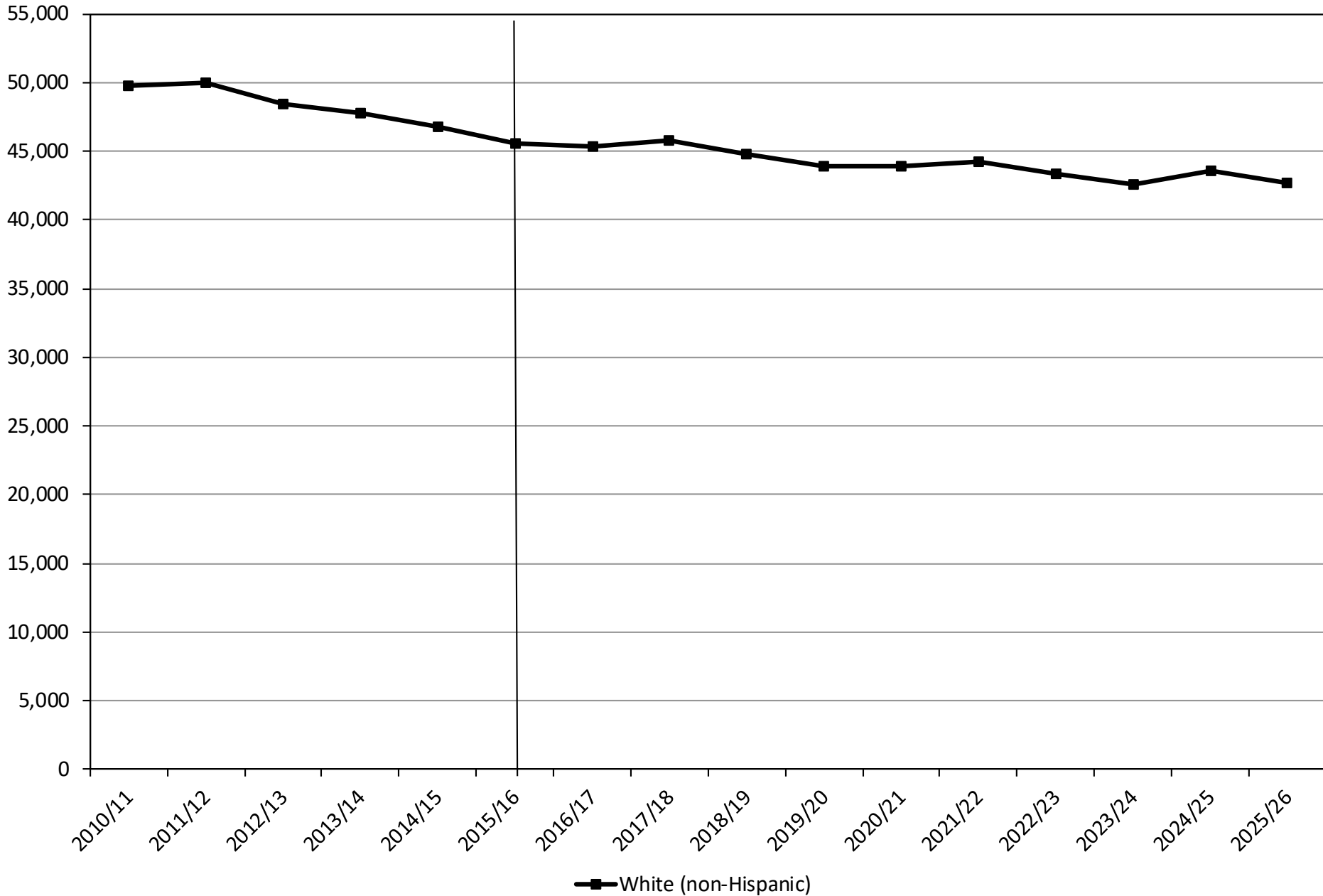
Waukesha (792)

Brown (730)

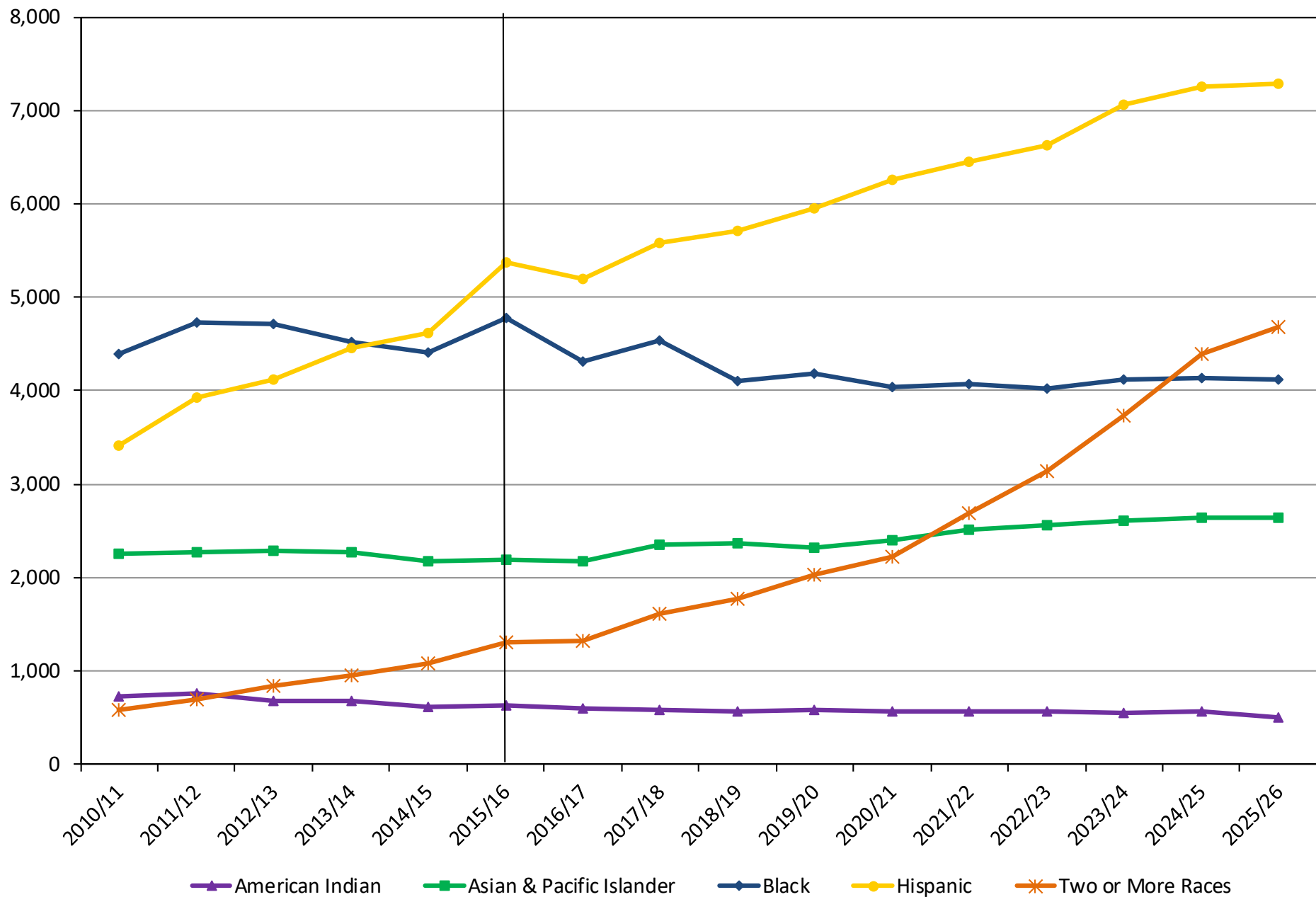
Wisconsin High School Graduate History and Projections, 2011-2026



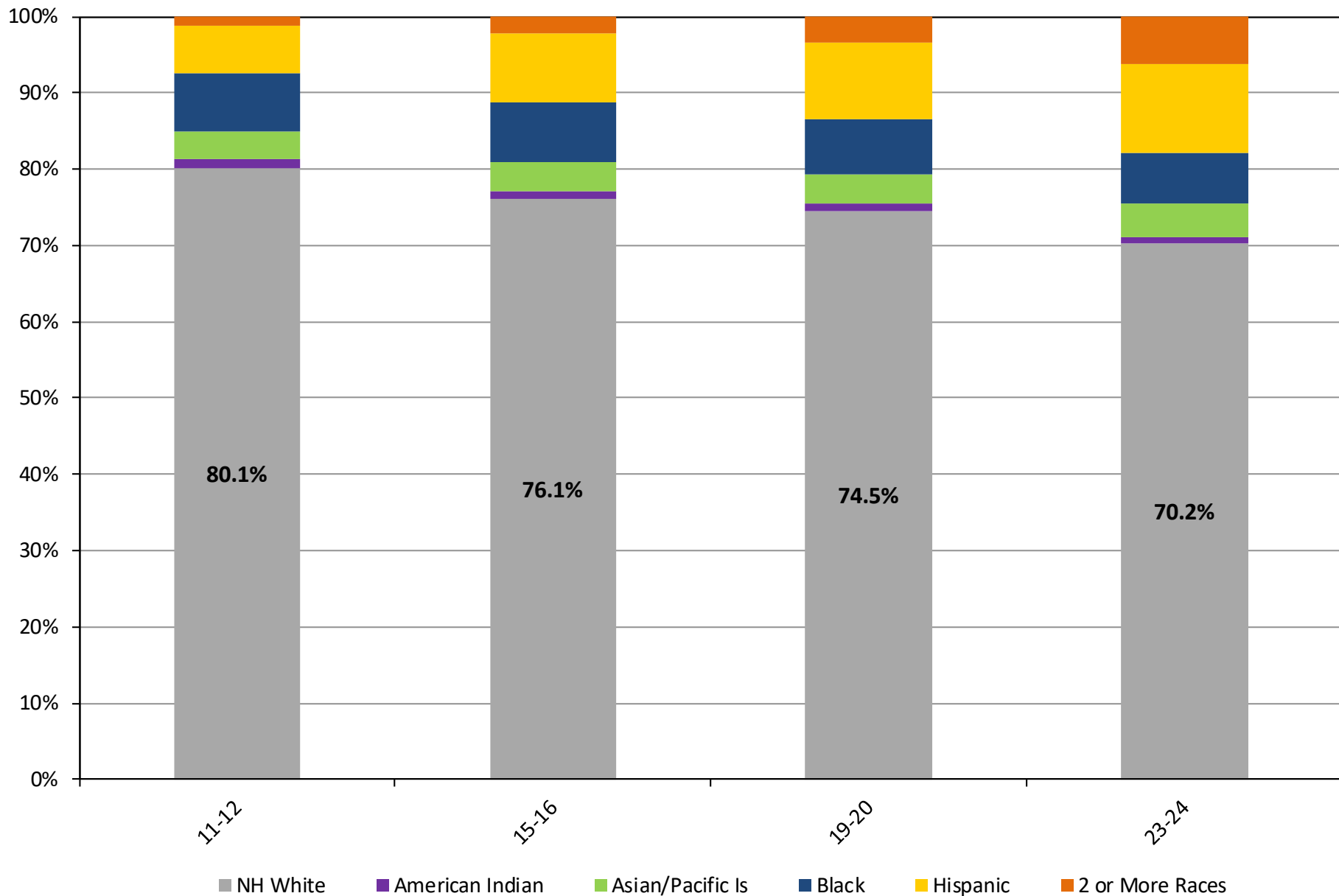
Public High School Graduate Projections by Race/Ethnicity, 2017-2026



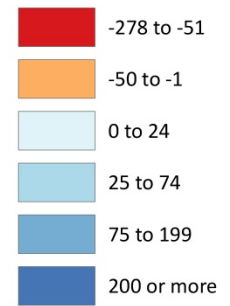
Public High School Graduate Projections by Race/Ethnicity, 2017-2026



Proportion of High School Graduates



Projected Change in Graduates from 2016 to 2026

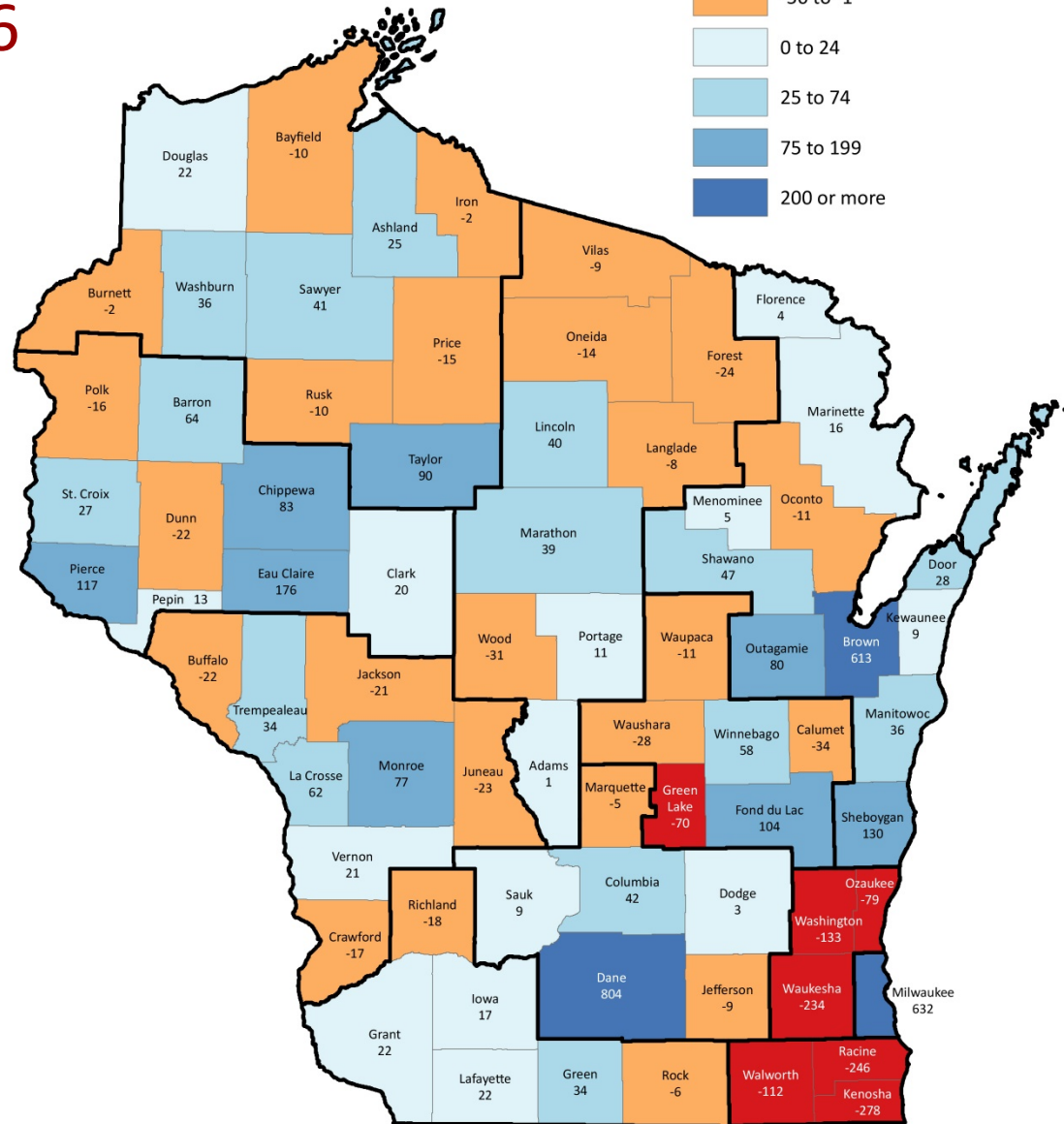


Largest Decline

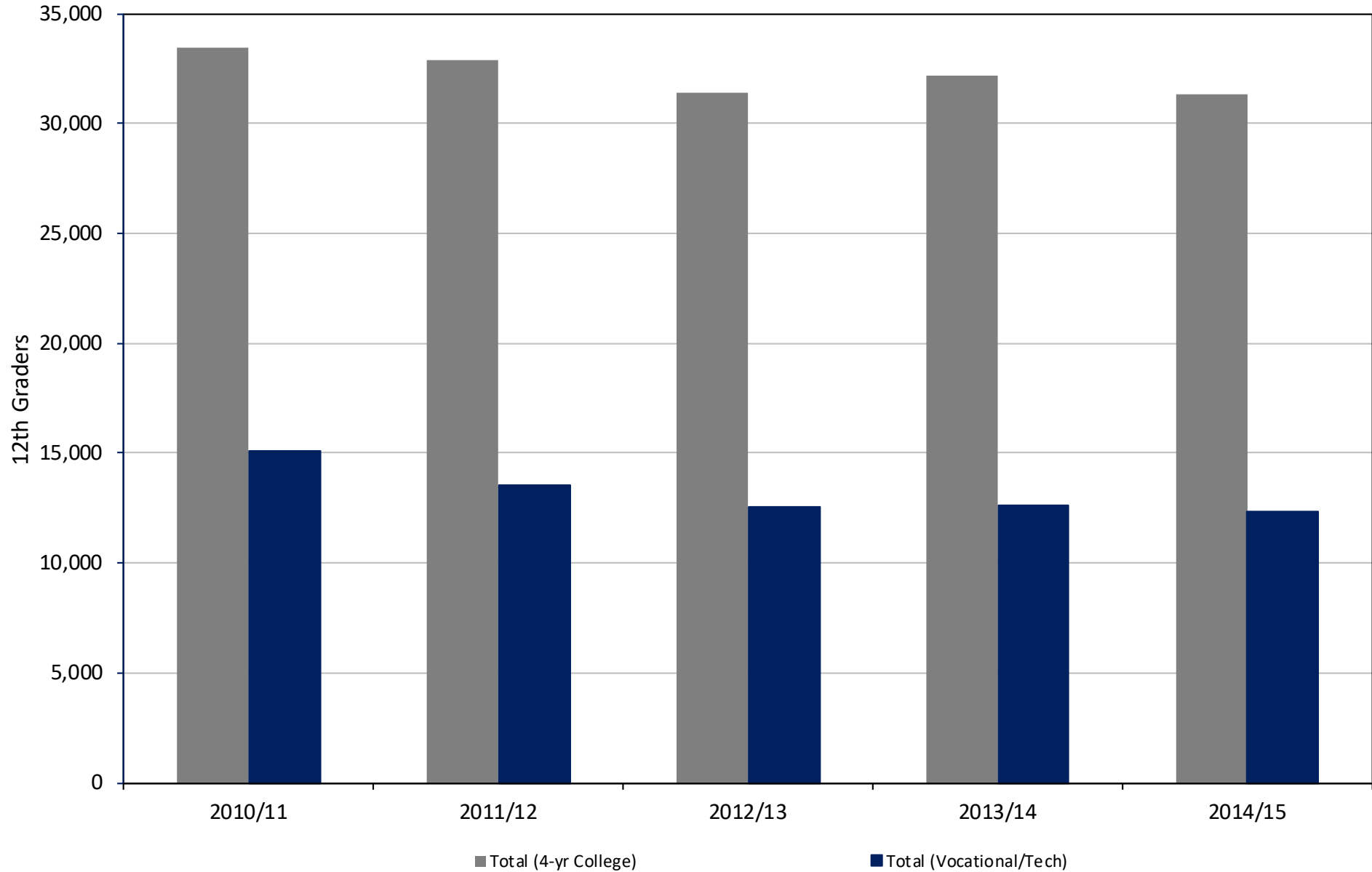
- Green Lake
- Kenosha
- Ozaukee
- Racine
- Walworth
- Washington
- Waukesha

Largest Increases

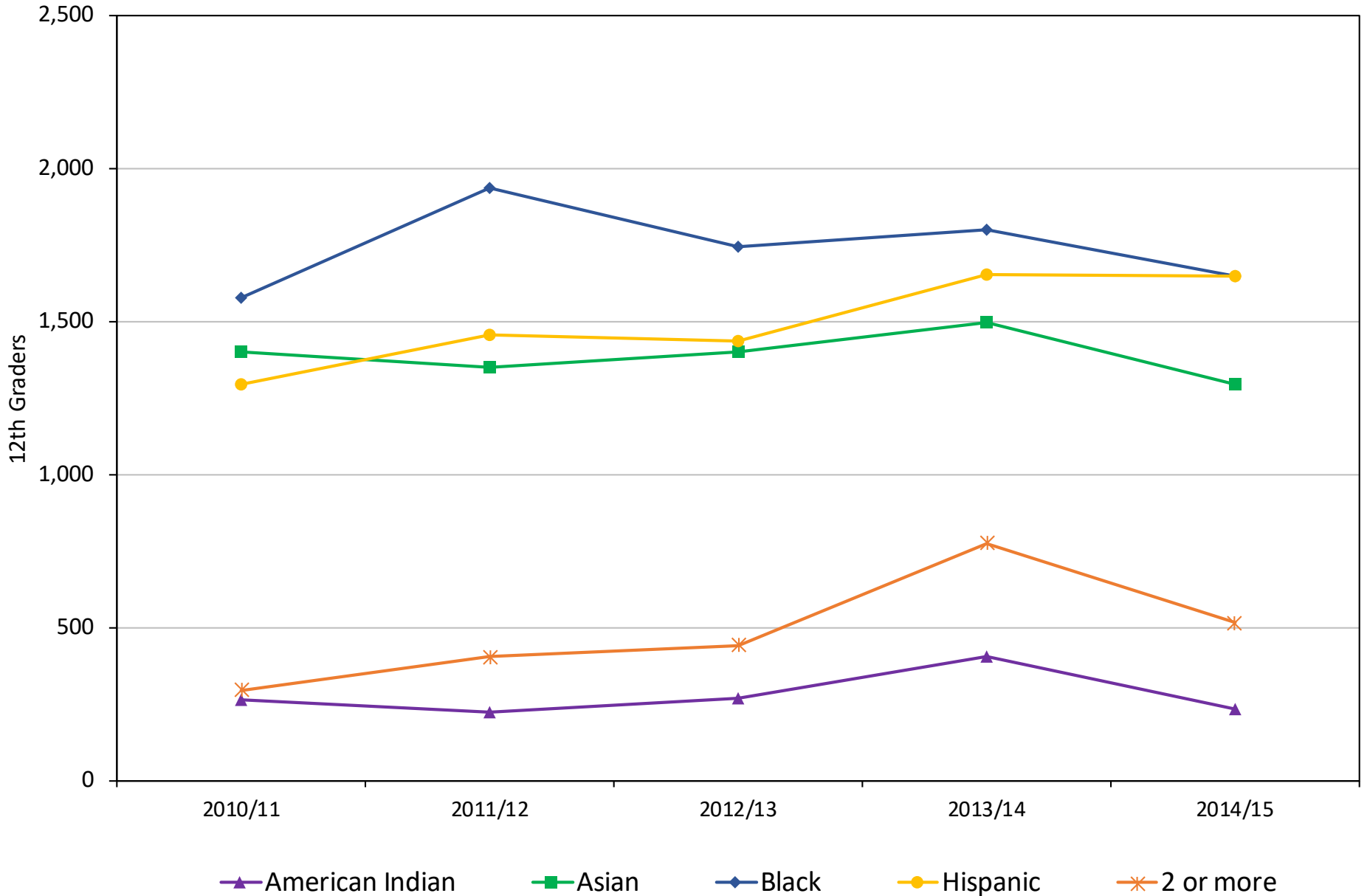
- Brown (613)
- Dane (804)
- Milwaukee (632)



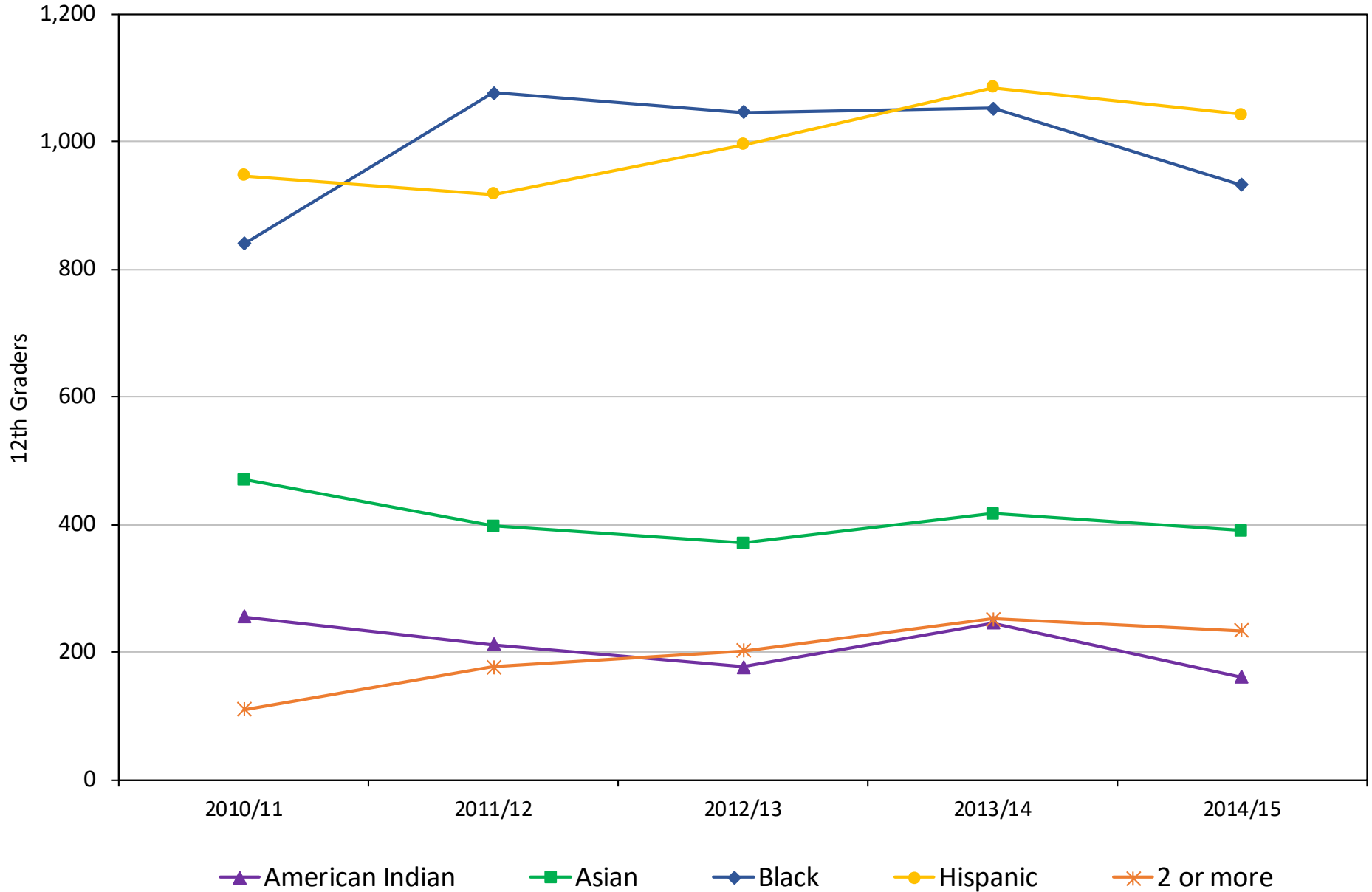
Plans to Pursue a 2 Year or 4 Year College Education



Plans to Pursue 4 Year College by Race/Ethnicity



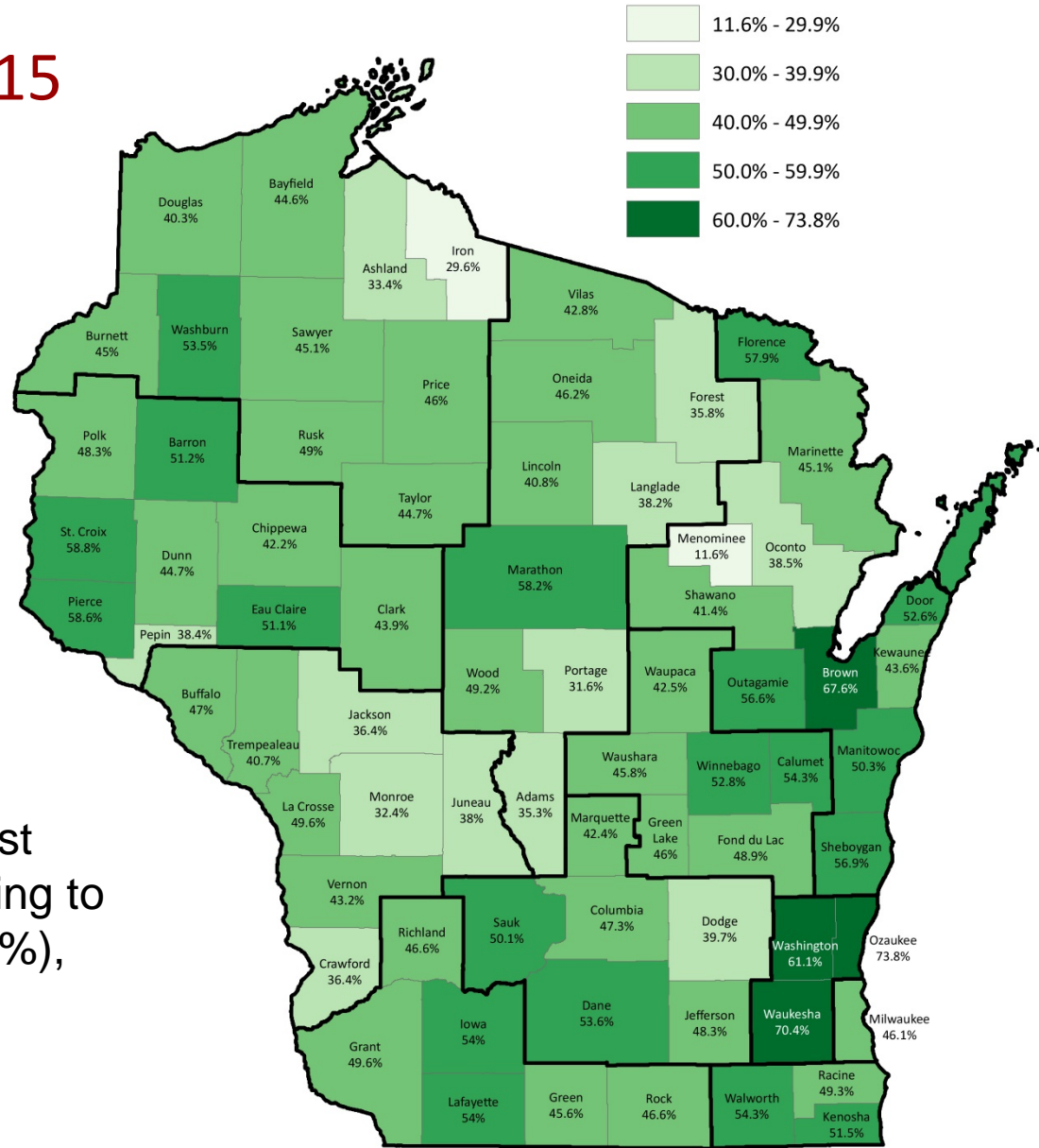
Plans to Pursue 2 Year College by Race/Ethnicity



Plans to Pursue Four Year College Education, 2014/15

Ozaukee County has the highest percent of 12th graders planning to enroll in a four-year college (74%), followed by Waukesha County (70%).

Menominee County has the lowest percentage of 12th graders planning to enroll in a four-year college (11.6%), followed by Iron County (29.6%).



Future High School Graduates


- Graduates will remain steady in the near term.
- Non-Hispanic White, Black, and American Indian graduates are expected to decline.
- Hispanic, Asian, and Two or More graduates are expected to increase.
- Graduate projections vary geographically.
- Greatest increases in urban areas while counties surrounding Milwaukee will likely decline.



Projecting Wisconsin High School Graduates

Thanks!

<https://www.wisconsin.edu/education-reports-statistics/reports-by-topic/>



Sarah Kemp, Researcher
Community & Environmental Sociology
Applied Population Laboratory
kemp@wisc.edu

